

RBEP25/30/35 + RBEPLBC110/145/180
Tool holder + Cutter bar 110/145/180 cm
 Micro tractor from 15 to 40 HP with PTO = 540 tr/min
 Minimum tractor weight = 660-900-1100 kg.

Cutting head working width 110, 145 and 180 cm - 3 point rear hitch cat.1 or 2.
 Horizontal reach to the tractor axle of 2.5m, 3m and 3.5m.
 Retractable knives width 48 thickness 4.
 Delivered with cardan transmission ASAE 1 3/8" - 6 slots.
 Tele-flexible controls, 1 of them with bi-directional control.
 Fuel tank 65 liters, group 2 pumps: 17cc+4.5cc, group 2 flat motor: 12cc.

The advantages :

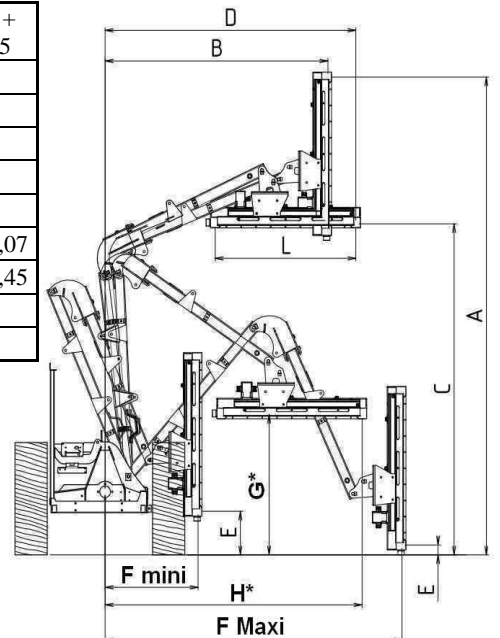
- Rotors with 2 retractable knives :** allows to secure the cut if vegetation is too high. 4.5 cm overlapping cut between rotors for a perfect cut.
- Hydraulic motor equipped with a unidirectional valve with 1 direction of rotation only - high speed of the rotors:** rotation at 2500 tr/min with a cutting speed of 60 m/s for optimum cutting and shredding quality.
- Rotor supports equipped with European quality bearings.**
- Belt drive type Poly V :** high adhesion drive without the need for a tension pulley (tension set at the factory).
- Wrap-around chassis with high entrance opening :** allows to cut large quantities of vegetation without laying it down, avoiding the risk of projections.
- Flat-bottomed rear panel :** stabilizes the platform while the tractor moves forward.
- 8 mm thick Hardox reinforced side skid:** allows to follow the ground in vertical position while protecting the chassis.
- Chassis side panels with height markers:** allow the cutting height to be monitored as the tractor moves forward.
- Cutting head:** 186° rotation angle.
- Safety cylinder:** allows the outer arm and the shredding head to be moved out of the way in case of collision.
- Locking bar :** locks the arms and the shredding head in the transport position by simply pinning them together.
- Bidirectional control:** allows simultaneous control of the inner and outer arm of the machine.

Safety and ergonomics: front rubber flaps against projections, retractable cylinder to avoid obstacles.
 Accessible greasing of all bearings and joints without disassembly.

References	Working width Cm	PTO Speed Tr/min		Weight Kg	TRACTOR		
					HP	Minimum Weight Kg	Minimum outside of wheels
RBEP25+RBEPLBC110	110	540*	3 x 2	312	15/30	660	1.10 m
RBEP25+RBEPLBC145	145	540*	4 x 2	323	20/30	660	1.20 m
RBEP30+RBEPLBC110	110	540*	3 x 2	322	20/30	900	1.20 m
RBEP30+RBEPLBC145	145	540*	4 x 2	333	25/35	900	1.30 m
RBEP30+RBEPLBC180	180	540*	5 x 2	344	25/35	900	1.30 m
RBEP35+RBEPLBC110	110	540*	3 x 2	344	30/40	1100	1.30 m
RBEP35+RBEPLBC145	145	540*	4 x 2	355	30/40	1100	1.30 m

	EP25 + BC110		EP25 + BC145		EP30 + BC110		EP30 + BC145		EP30 + BC180		EP35 + BC110		EP35 + BC145	
L (m)	1,10	1,45	1,10	1,45	1,10	1,45	1,10	1,45	1,80	1,10	1,45	1,10	1,45	
A (m)	3,30	3,65	3,70	4,05	4,39	4,15	4,50							
B (m)	0,80	0,80	0,80	0,80	0,80	0,90	0,90							
C (m)	2,00	2,00	2,40	2,40	2,40	2,80	2,80							
D (m)	1,70	2,05	1,90	2,25	2,59	2,10	2,45							
E (m)	0,31	0,07	0,31	0,07	0,31	0,31	0,07	0,07	0,31	0,07	0,31	0,07	0,31	0,07
F (m)	0,70	2,57	0,70	2,57	0,70	2,97	0,70	2,97	0,70	2,97	0,70	3,45	0,70	3,45
G*(m)	1,00	1,00	1,00	1,00	1,00	1,00	1,00	1,00	1,00	1,00	1,00	1,00	1,00	1,00
H*(m)	1,21	1,56	1,65	2,00	2,34	1,80	2,15							

* Indicative dimensions for bush of 1m height.



Options :

Hitch stabilizer (RBEPLSTAB) consisting of 2 adjustable push bars, a 3° point multipoint hitch and fixing shafts.

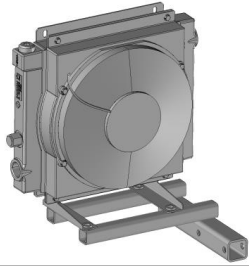
Heat exchanger (RBEPLRH) consisting of heat exchanger, fixing kit and hydraulic connection.

60 kg counter weight set (RBEPLM60) consisting of 5 weights of 12 kg each and support.

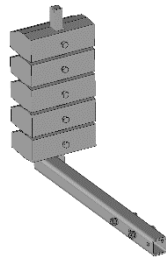
Set of Boomerang knives (BCKCB110/145/180) consisting of 3/4/5 knives.



Hitch stabilizer



Heat exchanger

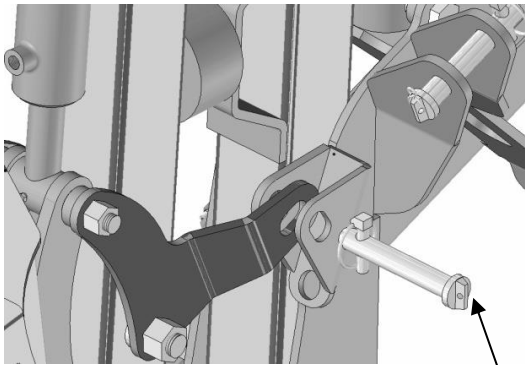


60 kg counter weight set

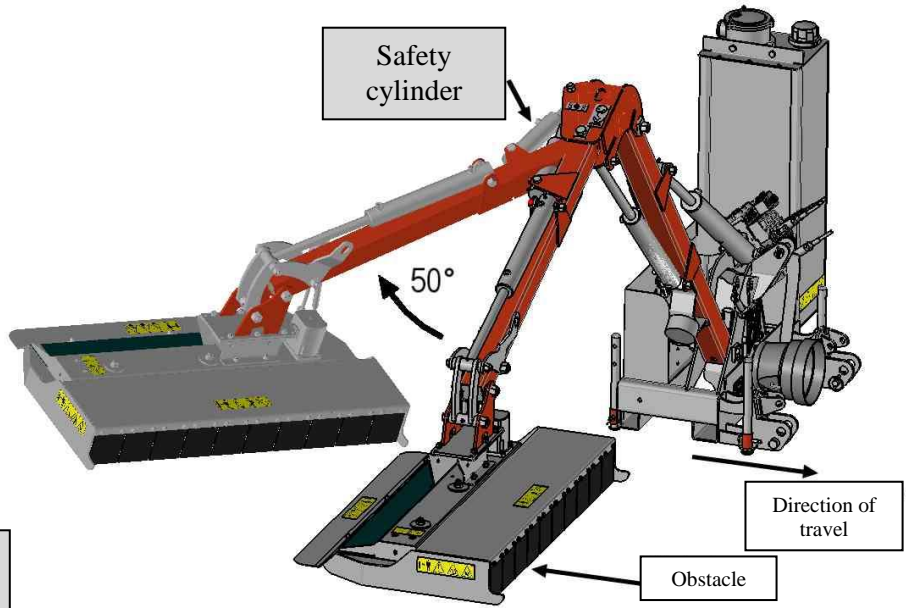


« Boomerang » knives

Transport position locking



Locking bar



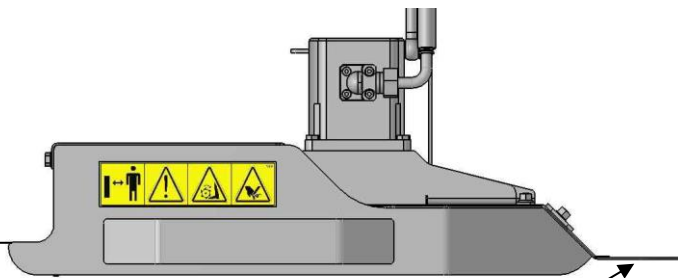
Safety cylinder

50°

Direction of travel

Obstacle

Cutting height indicator



Stabilizer flat bottom

Cutting head, angle of rotation 186°.

Caution Floating position not allowed

